

SATELLITE BEVEL



Uses include recessed retrofit for multiple can sizes, surface mount retrofit, and new construction. The low profile bevel design is available in two sizes and three finishes with 3000K energy-saving dimmable LED light and on-board driver. Up to 650Lm per fixture.

Performance

- Warm White 3000K LED light with 90+ CRI in two sizes
- Low profile bevel trim measures only 3/4" high
- Dimmable with most standard incandescent (triac) and low voltage electronic dimmers for 5-100% light control
- ENERGY STAR pending

Construction

- Injection molded impact resistant plastic design with baked enamel finish is sleek and durable
- Attached heavy duty aluminum heat sink ensures longevity
- Polycarbonate lens diffuses and softens light

Installation

- Attach torsion spring clips as needed for retrofit installations - the ST56 fits in 4", 5" and 6" cans; the smaller ST4 fits in 3" and 4" cans; or use either as a surface mount using the 4" j-box mounting bracket (included)
- Driver on board is easier to install than remote driver on cord - compatible with standard depth and 'pancake' junction boxes



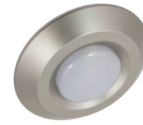
3/4" Satellite Bevel



Dark Bronze Trim
Up to 550 Lumens per fixture
ST4-30-DB
120V - 3000K



White Trim
Up to 550 Lumens per fixture
ST4-30-WH
120V - 3000K



Nickel Trim
Up to 550 Lumens per fixture
ST4-30-NK
120V - 3000K